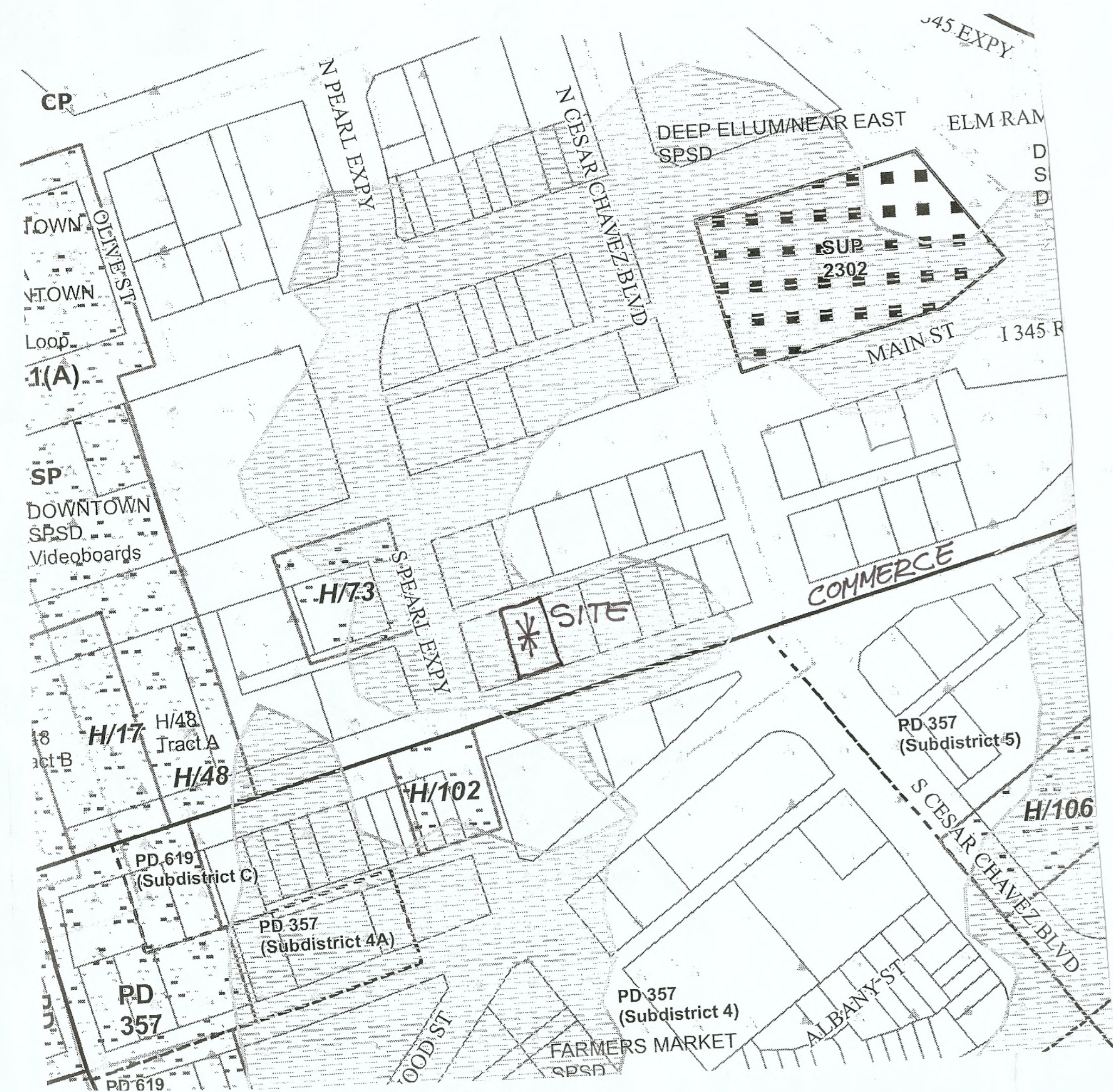
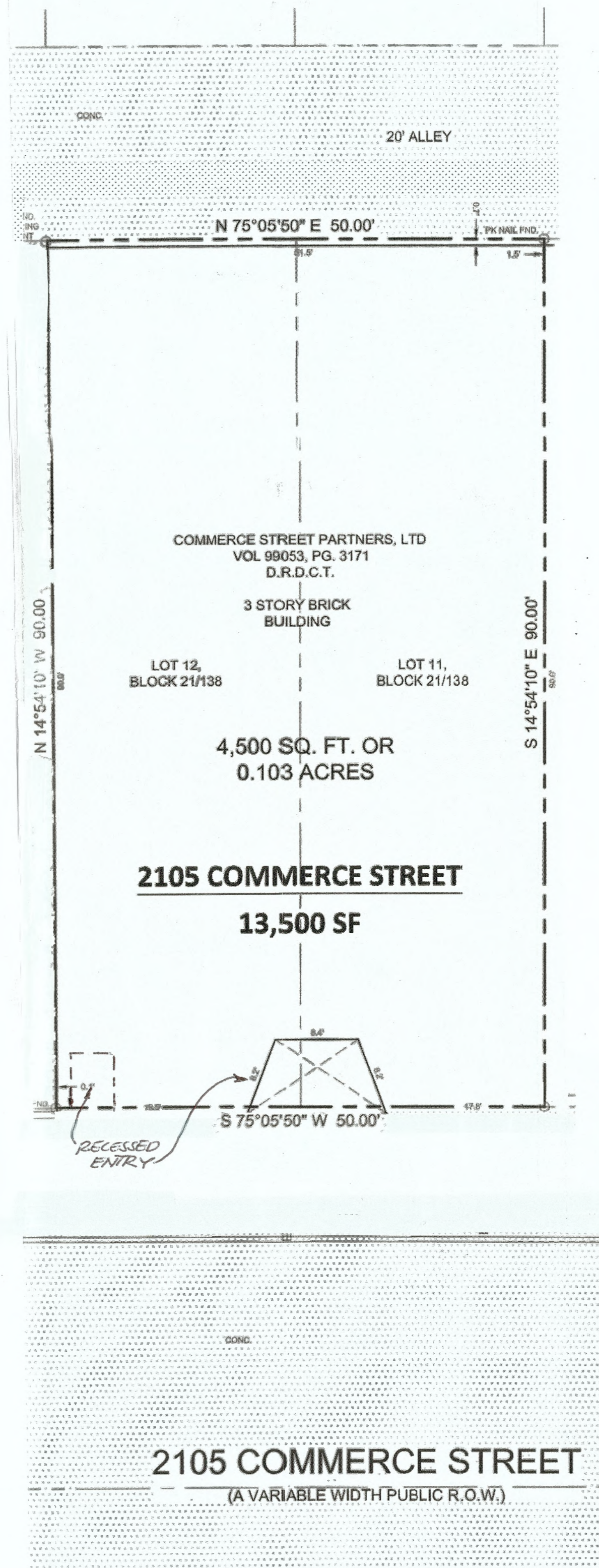


DATA:  
 Zoning: CA-1(A)  
 Land Area: 4,500 sf  
 Building Area: 13,500 sf  
 Height: 3 stories  
 Proposed Use: Hotel with less than 60 rooms  
 Request: SUP for a hotel with less than 60 rooms



VICINITY MAP



COMMERCE STREET PARTNERS, LTD  
 VOL. 99053, PG. 3171  
 D.R.D.C.T.

3 STORY BRICK  
 BUILDING

LOT 12,  
 BLOCK 21/138

LOT 11,  
 BLOCK 21/138

4,500 SQ. FT. OR  
 0.103 ACRES

2105 COMMERCE STREET

13,500 SF

S 75°05'50" W 50.00'

2105 COMMERCE STREET  
 (A VARIABLE WIDTH PUBLIC R.O.W.)

PROJECT:

SOVA  
 HOSPITALITY  
 2105 COMMERCE STREET  
 DALLAS, TX 75201

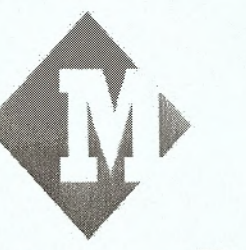
ARCHITECT:



Tom Chapman Architect  
 3311 Elm Street, Suite 105  
 Dallas, Texas 75226  
 214-742-6044

© COPYRIGHT PROTECTED

ARCHITECT'S SEAL:



Masterplan

CONSULTANT:

CONSULTANT'S SEAL:

FULL SET ISSUE HISTORY:

ISSUE	DATE
PROGRESS SET	11/05/19
PRE BID SET	01/16/2020
PERMIT SET	01/21/2020

SHEET DELTA REVISION:

NO.	DESCRIPTION

DRAWING INFO:

FILE: A1.05 Site Plan.dwg

DRAWN BY:

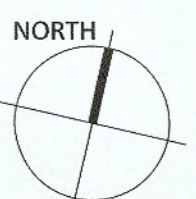
CHECKED BY:

SHEET NUMBER:

SITE PLAN

01 SITE PLAN

1" = 10'-0"



12-0913